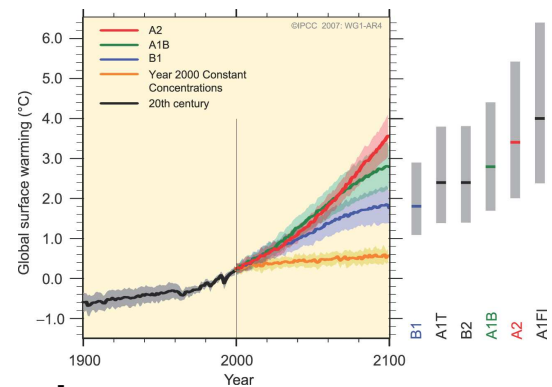


# Uncertainties of scenario simulations

**14 October 2010, 9:00-18:00**  
**SMHI, Norrköping, Sweden**

**W**  
**O**  
**R**  
**K**  
**S**  
**H**  
**O**  
**P**

**Workshop for scientists concerned with scenario modelling of climate, nutrient load and atmospheric deposition and fisheries, risk management etc. Special focus is on the Baltic Sea Region.**



## Invited lecturers:

- **Dr Samu Mäntyniemi (University of Helsinki)**
- **Dr Jouni Räisänen (University of Helsinki)**

## Scientific presentations & discussions on topics:

- **Methods to estimate uncertainties of scenario simulations**
- **Possibilities to combine Bayesian risk analysis and climate change ensemble modelling**
- **Collaboration between projects**

Submission of contributions (presentations or posters) (deadline 15 September) and registration (deadline 1 October) by email to [Helen.Andersson@smhi.se](mailto:Helen.Andersson@smhi.se) (limited number of places). Information on travel connections, accommodation etc. available on

<http://www.baltex-research.eu/ecosupport>